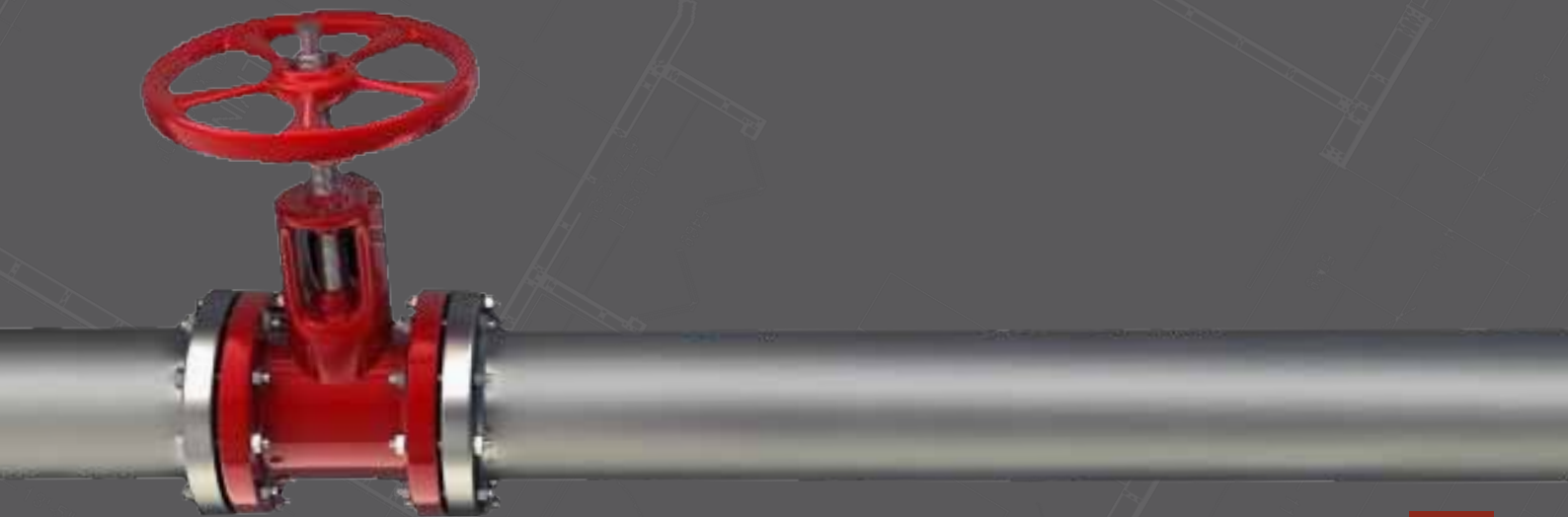




بناء وإنماء Bena & Enmaa



Leading in Project planning and Management

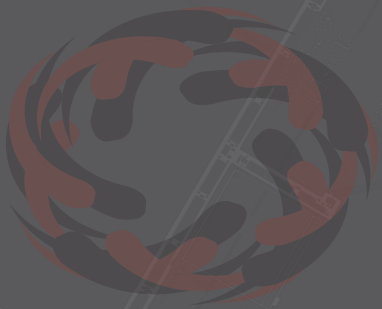


Bena & Enmaa



About us

Established in 2006 for the purpose of providing Services as well as Engineering Solutions in the fields of Constructions and Infrastructure. Bena & Enmaa is considered leading in Project planning and Management of Industrial Buildings, residential, commercial, recreational buildings – Decoration work – and all infrastructure related work.





SAP XII-1400266
AVL JET 300 ISBAR A/GW 10000PA
METAL SERVICES
TUM NO-DUAB-2-9
M. 02700014 TEE W/1/18

Mission:

Implementing Projects with the highest level of Quality as well as Safety.



Goals:

- Achieve operational excellence in all business.
- Attract the best manpower competencies.
- Strengthen relations with existing customers and attract new customers.
- Commit to social development.



Infrastructure:

Infrastructure projects are considered one of the main activities of the institution. Therefore, Bena & Enmaa ensures using the latest in Machinery, Equipment, and Technology. As well as the cooperation with, international Companies in the fields of Water Technology.





D.H. GRIFFIN
INFRASTRUCTURE

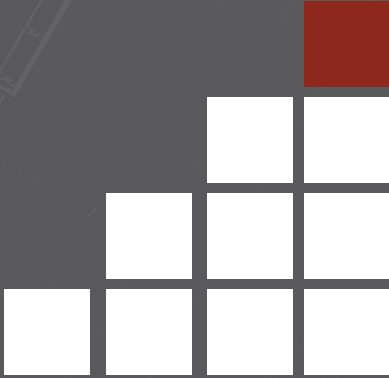
740

D.H. GRIFFIN
INFRASTRUCTURE



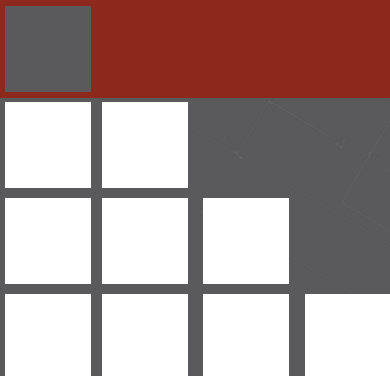
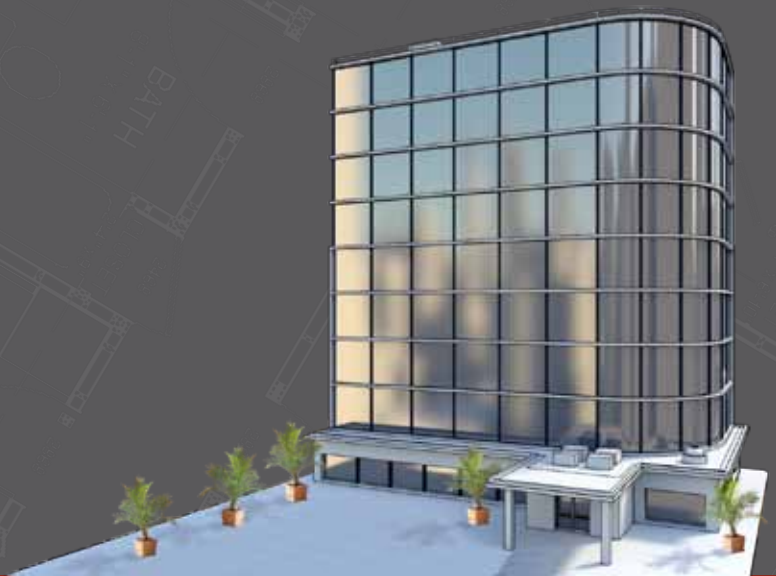
Building & Constructions:

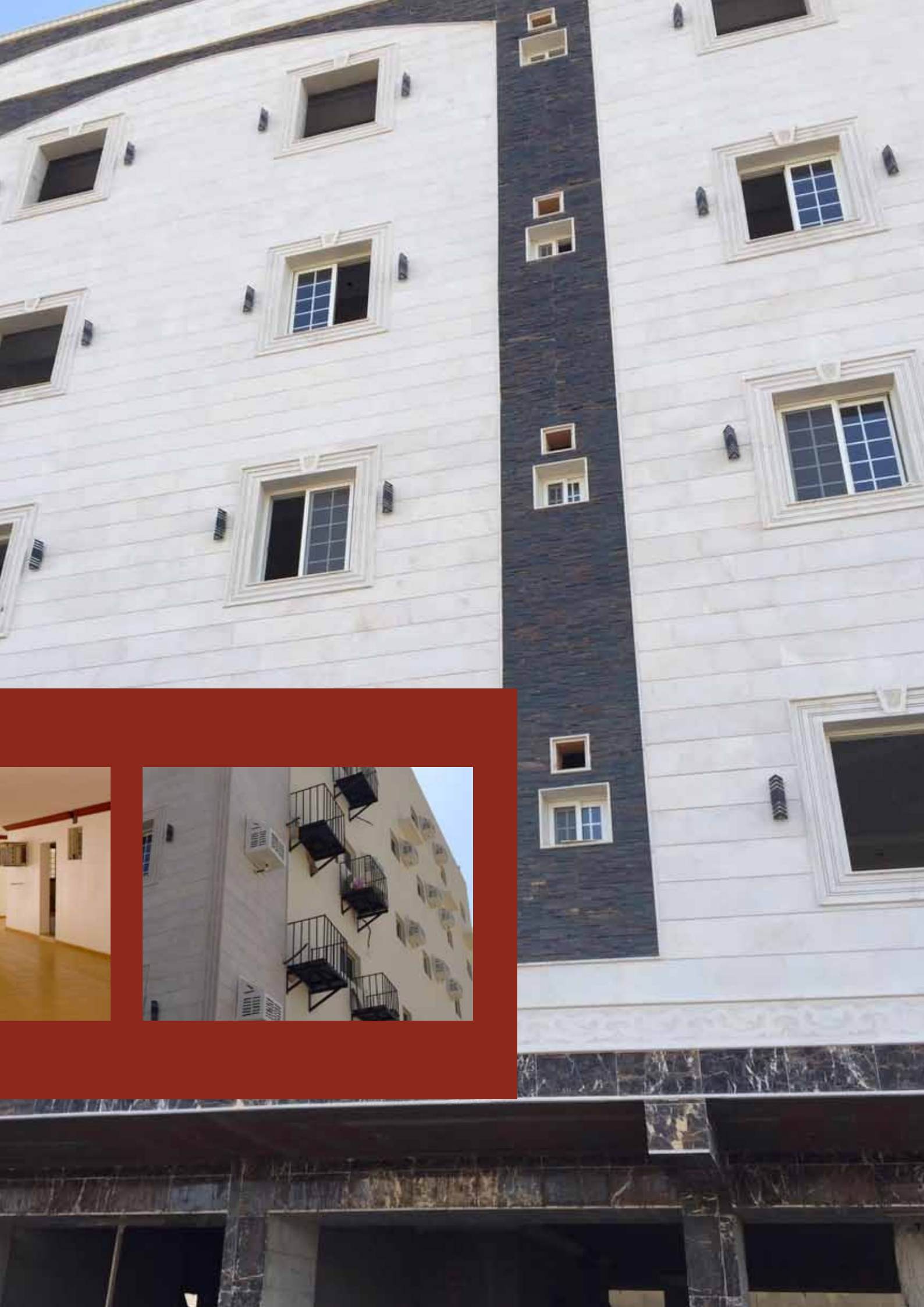
Includes a number of Engineers and technicians who specialize in the field of designing and construction of industrial, commercial, educational, and recreational buildings.



Real Estate Development

Bena & Enmaa provide investment and real estate development services through investment opportunities of modern architectural renaissance in the field of residential real estate in all areas. Including, Conversion of white spaces into safe investment opportunities that are well thought out and designed establishments.

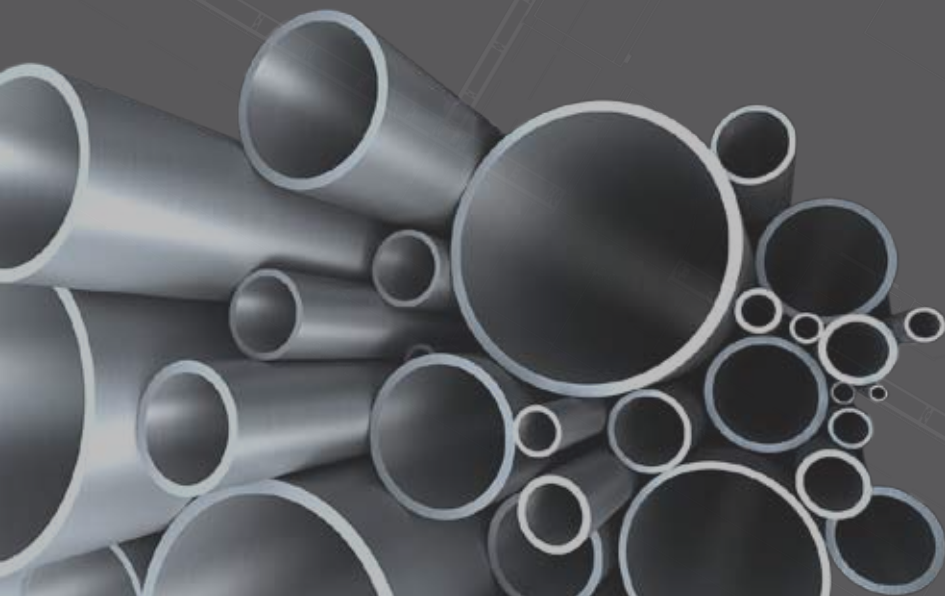






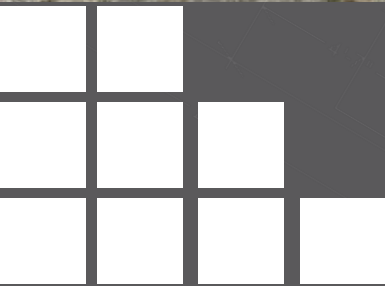
Engineering Services

Bena & Enmaa provide expertise such as Project management, execution, and problem solving in the field of water and sanitation for all phases of the project. Beginning with the feasibility study through design and construction, all the way to implementation.





Services:



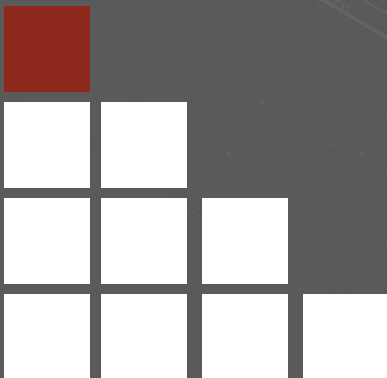


1. Study and analyze stresses pipeline.
2. Designing drawings and Isometric pipe systems.
3. Provide programs to improve and develop the production of pipelines, reduce the cost of production and to provide operational support to the manufacturing process.
4. Examination and analysis for pipelines identify problems and provide appropriate business solutions.
5. Re-evaluation of projects.
6. Pipeline inspection and leak detection by sensors (CCTV).
7. Provide engineering services and solutions in the field of drilling Tunneling (Microtunneling).

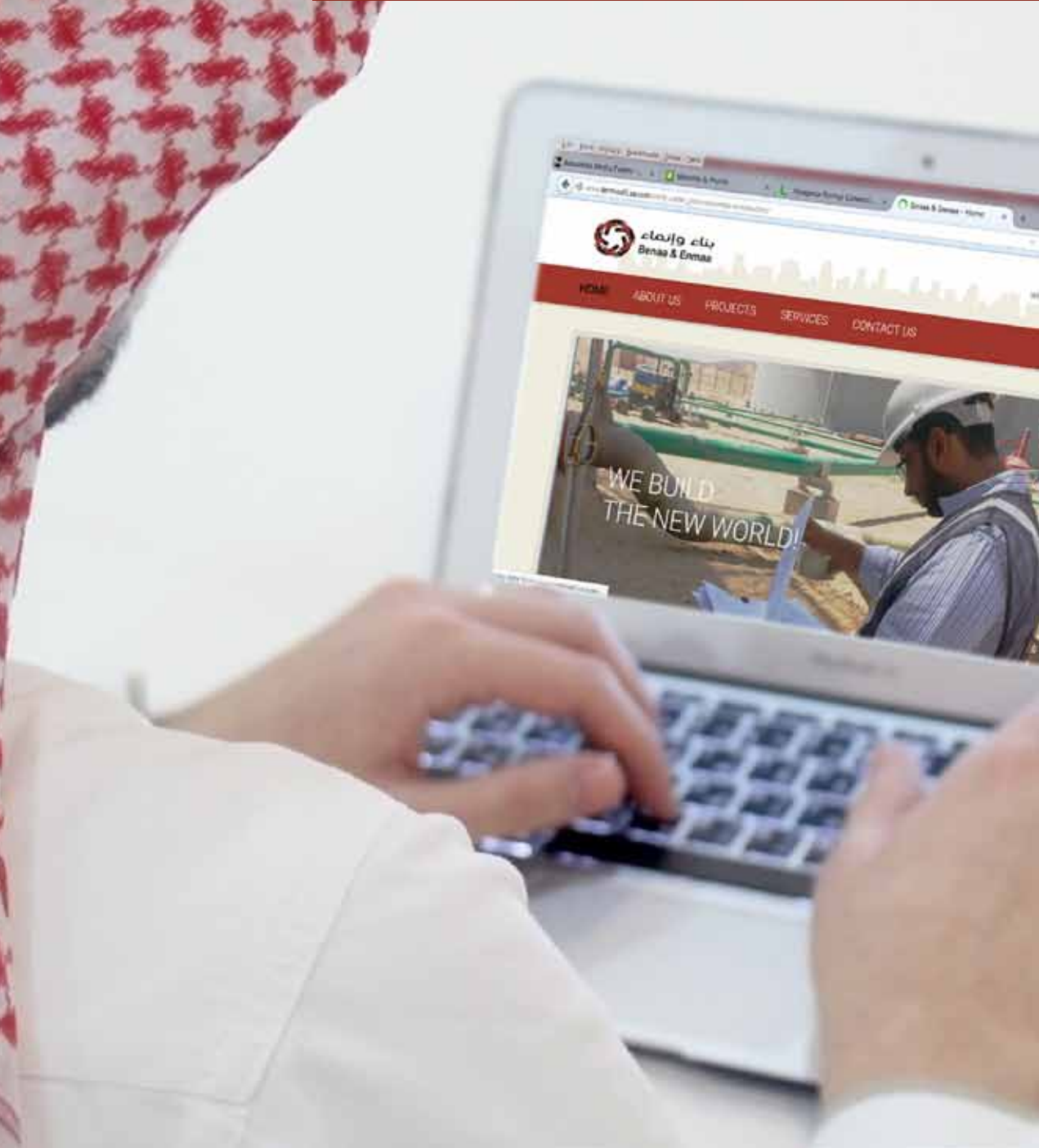
Aspirations



Bena & Enmaa aspires to continually improve in the fields of infrastructure, Building and constructions as well as the field of Real Estate Development. Also, we aspire to maintain the highest quality possible with the lowest cost. And all of that is achievable through keeping up with the latest technologies as well as ensuring the development of manpower by training.









Social Contributions

- Preservation of Environment by the use of alternatives as well as recycling.
- Investments that contribute to the development of the local economy.
- Create job opportunities for Saudi youth.



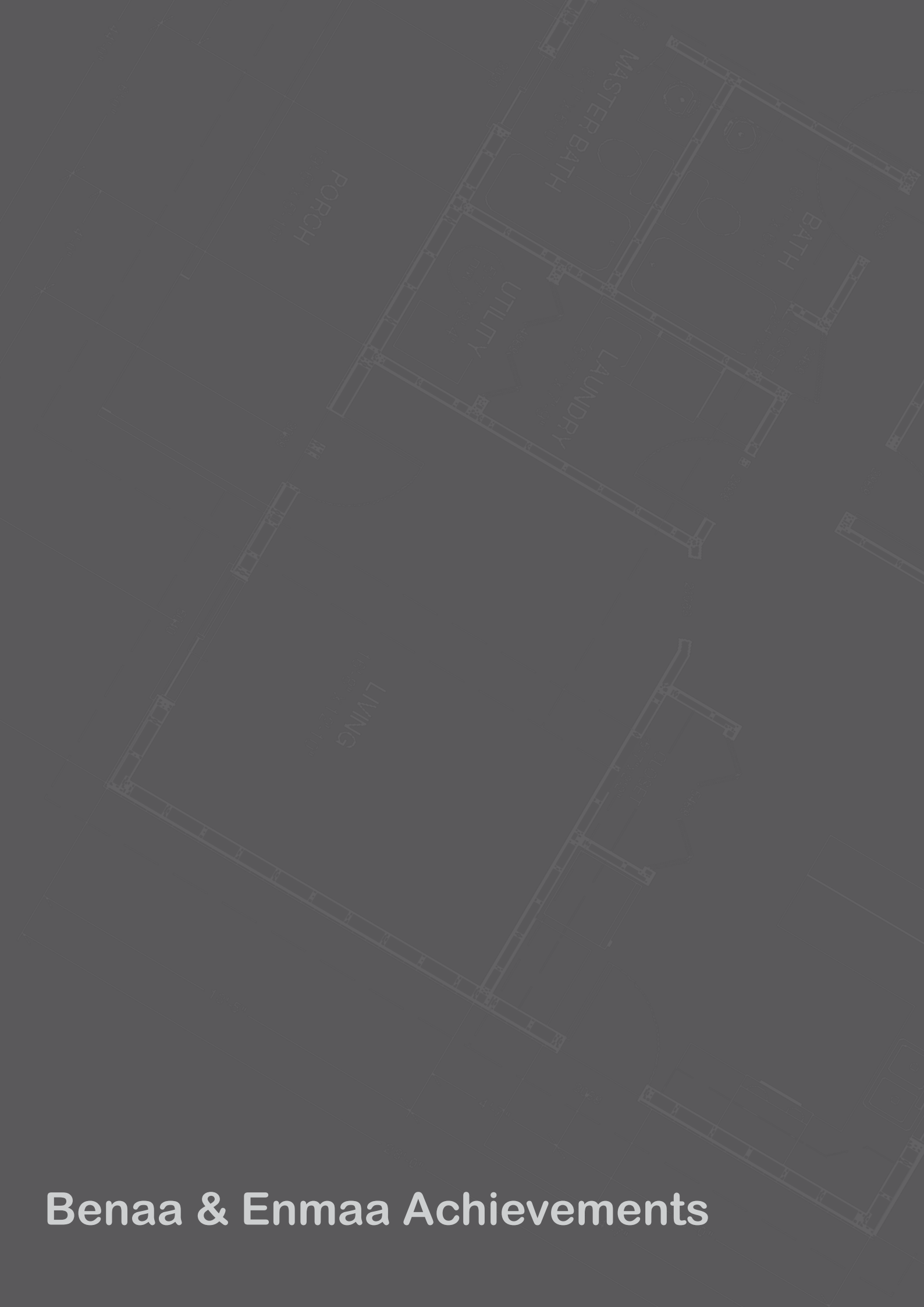
Performance Strategies



Bena & Enmaa focuses on building diverse teams of Engineers, Technicians, and Specialists in the areas of Project management, Engineering Services, and Infrastructure Work.







Bena & Enma Achievements



Maaden

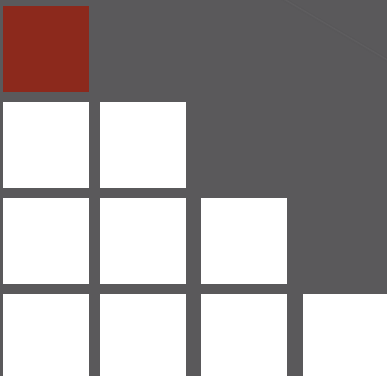


EPC Package 1:

Transport Pump Station (TPS) and 71KM Pipeline up to Mater Pump Station which shall consist of Transfer Pump Station inclusive of all facilities with fence and Operation building, SEC room, Interconnecting Piping and fittings, Transfer Pumps, 71KM Pipeline installation up to nozzle of Water Storage Tanks at MPS, Pressure Reducing Valve, Relief Valves, Gear Operated Valves and associated WORK's related to Electrical, Instrumentation and Communication equipment's. EPC-1 shall conduct hydraulic analysis for the 71KM segment.

EPC Package 2:

Master Pump Station (MPC) and 233 KM Pipeline up to KM304 marker which shall consist of Master Pump Station inclusive of all facilities with fence, Office Building and Pump House Building, Guard house, SEC room, Interconnecting Piping and fittings, 233KM Pipeline installation from KM71 to KM304 Marker, valves and associated WORK's related to Electrical, Instrumentation and Communication equipment's. EPC-2 shall conduct Hydraulic analysis for 349KM from MPS to Ad-Duaihi.





EPC Package 3:

Ad-Duaihi Storage Facility and 116KMS Pipeline up to Ad-Duaihi which shall consist of Ad-Duaihi Storage Facility inclusive of all facilities with fence, Generator Room, Pump Shelter and Operation Building, Guard House, Interconnecting Piping and fittings, 116KM Pipeline and FOC installation from KM304 to Ad-Duaihi, Pressure Reducing Valve Station, Relief Valves, Gear Operated valves and associated WORK's related to Electrical, Instrumentation and Communication equipment's

Construction Work Al-Khumara Area

Project location: Al-Khumara - Jeddah

:Project details

- Cutting and drilling work and the deportation of waste
- Armed concretes for bases
- Armed concrete draining channels
- .Construction works ground reservoirs

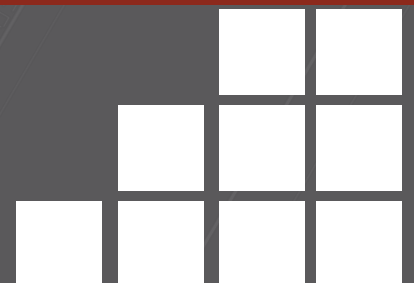


Fiber -optic networks

Project: The expansion of fiber optic networks

Owner: Saudi Telecom Company

- **Project location:** The western region – Yanbu
- **Project details:** Full implementation of cabin includes the work of cutting and drilling cabling according to the technical specifications for STC.





become Customers' first choice

